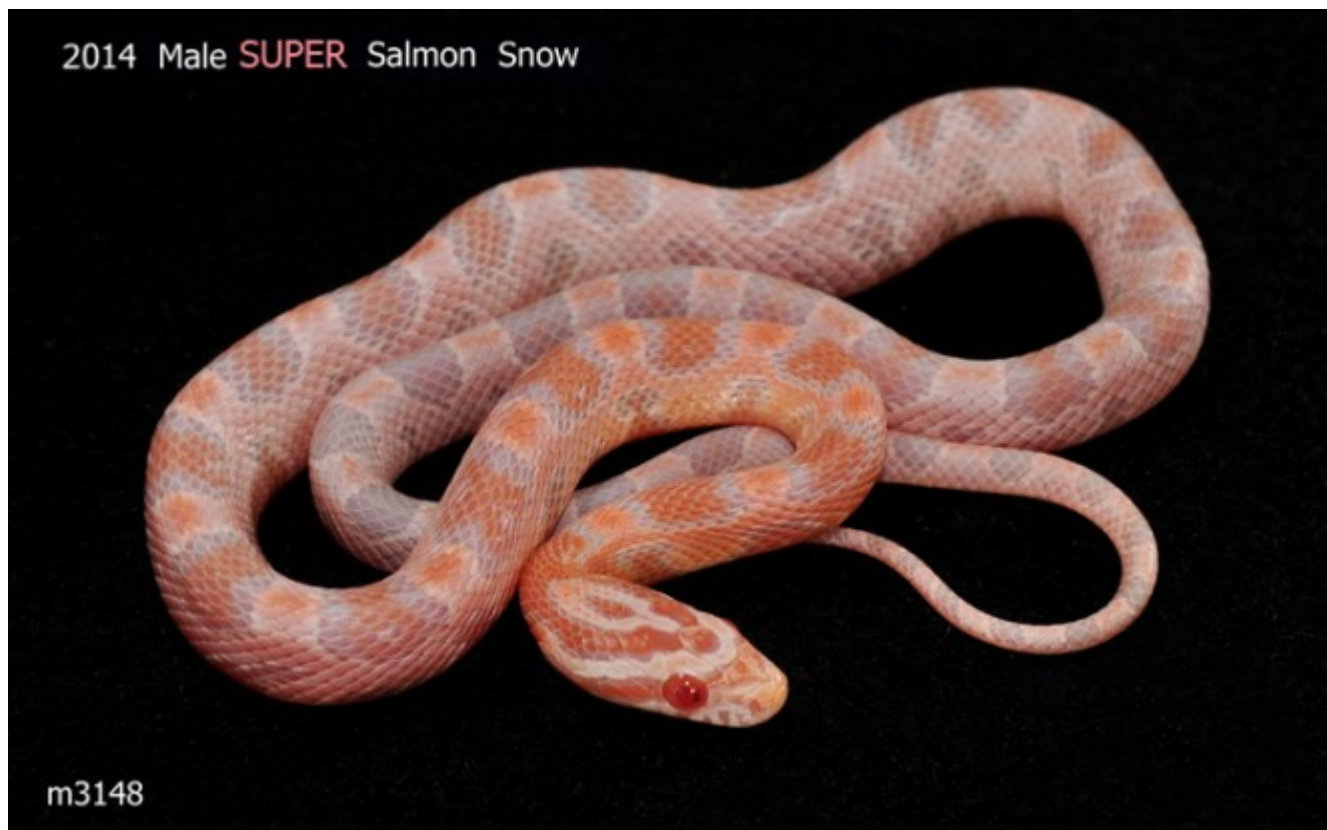


## Show & \$ell

{product id=837}



2014 hatchling male SUPER FORM Salmon Snow Corn Snake. Showing this much color at such a tender age promises that this snake is a Super Salmon Snow (aka: homozygote - possessing both copies of the gene that causes Snow corns to be so pink/coral in color. Therefore, he will be much more colorful as an adult. His \$195.00 price includes

Here at SMR, we consider any Snow (or ghost) that exhibits exaggerated/remarkable pink or coral colors to be one of several different family lines of the general group we call CORAL SNOWS. Below are those popular lines;

- Salmon
- Champagne
- Neon (a refinement of Lloyd Lemke's Bubblegum Snow)

Pairing any two of these popular lines (and other similar lines) will render snows that demonstrate exaggeration of the pink or coral colors. Coral snows with less color than the ones featured toDAY are believed to only be in possession of one copy of the gene mutation that causes Snow and Ghost corns to be excessively pink. We generally call this gene *Red Mask* or *Red Factor*. Therefore, you could call any of these three popular lines simply, *Coral Snows*.

The Coral Snows that possess less demonstration of pink and coral as hatchlings are regarded to be VISUAL HETS of the gene mutation, Red Mask. The three snakes featured toDAY are regarded as homozygotes (aka: Super Salmon Snows) because they possess both copies of the Red Mask mutation. Every Super Salmon Snow we've EVER seen was remarkably more colorful than the visual hets typically sold in the hobby toDAY. Hence, distinctive pricing between those with a "blush" of pink or coral VS. those with deeply-saturated coral and/or pink coloration.