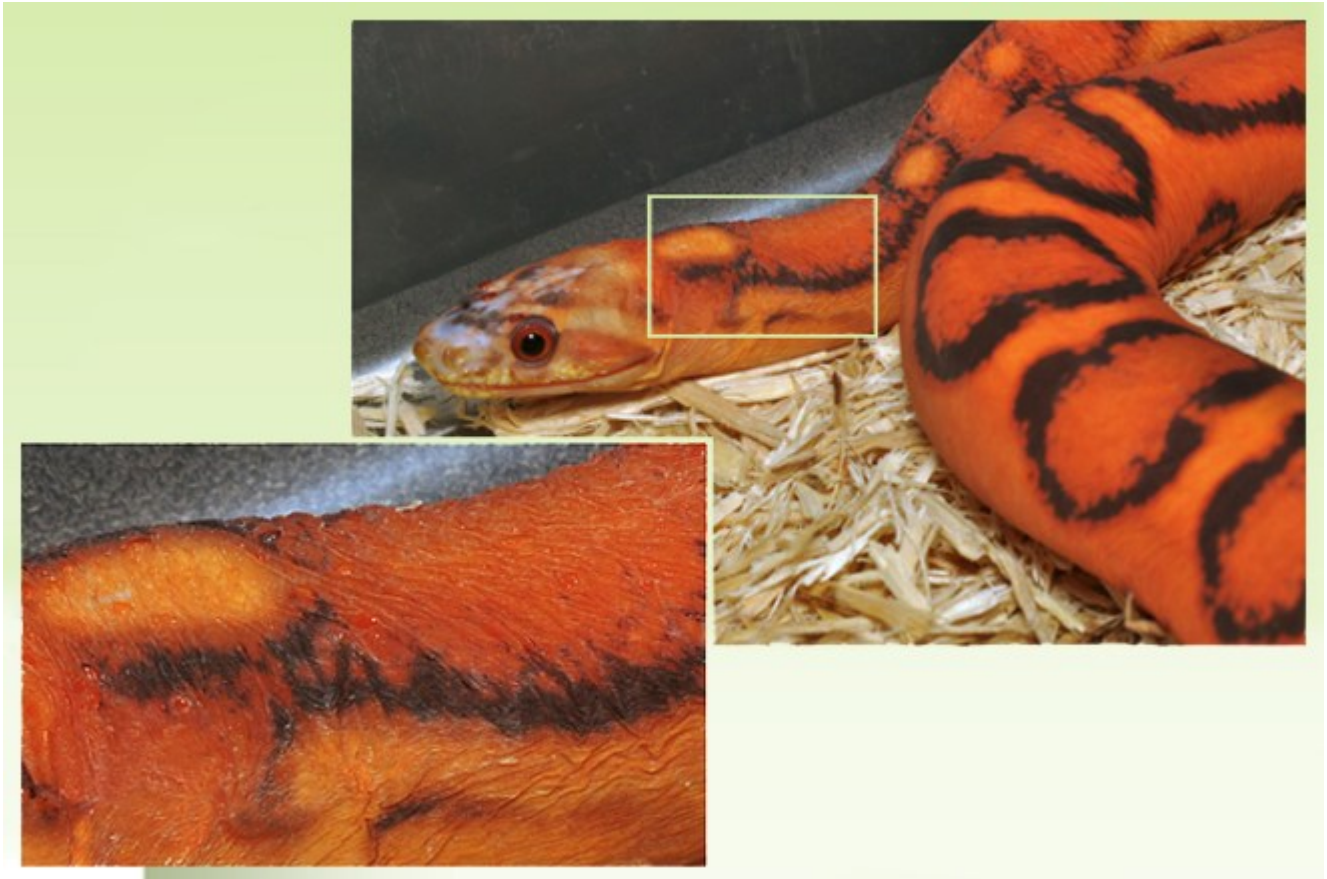


FLASHBACK S.O.T.D. from April 4, 2014

SHOW and TELL:



Lower-left inset pic shows an enlargement of a body zone of this Scaleless Extreme Okeetee featuring a few random small and atypically-shaped scales, and wrinkled skin.

So far, only one of our adult Scaleless corns requires a damp moss nest box prior to shedding. All the others slough their skins in one or two pieces without any assistance or cage accessories. We have never misted their cages or otherwise made any attempt to increase ambient cage humidity.