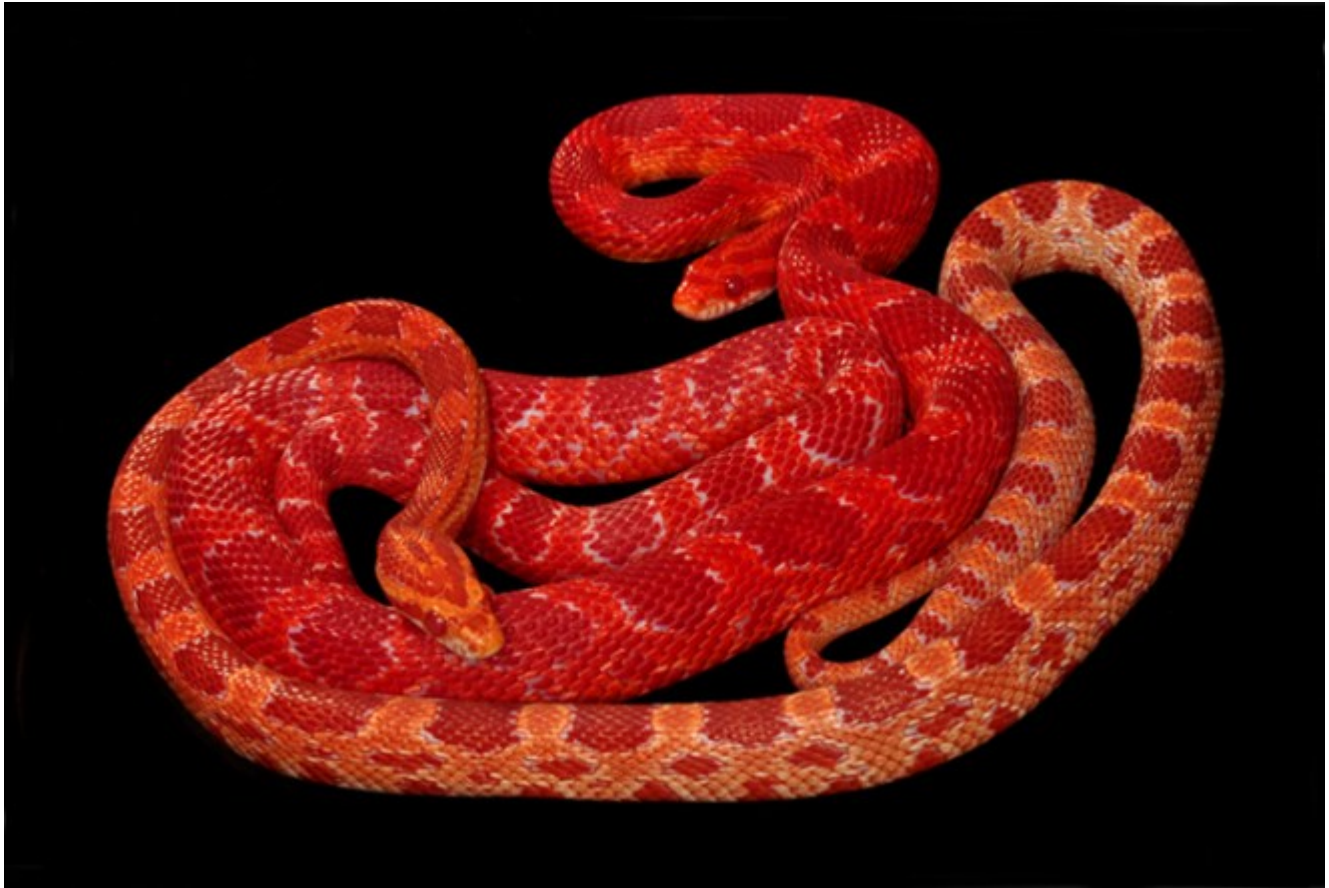


Show & Tell



Comparison shot of one of our potentially new mutations, *an as-yet unnamed red-modifying gene*. Breeding trials are ongoing to identify the mode of inheritance. The lower snake in this picture is a somewhat typical Amelanistic mutant.

Both are neonates (under 1.5 years of age). It is obvious that there is nothing new about red markings on an Amel mutant, but what is new (for a non Diffused mutant) is the nearly matching red ground color. Members of this “?gene mutation?” so far have matured to be even more red than this one, so we expect this one to also be more deeply red at maturity.