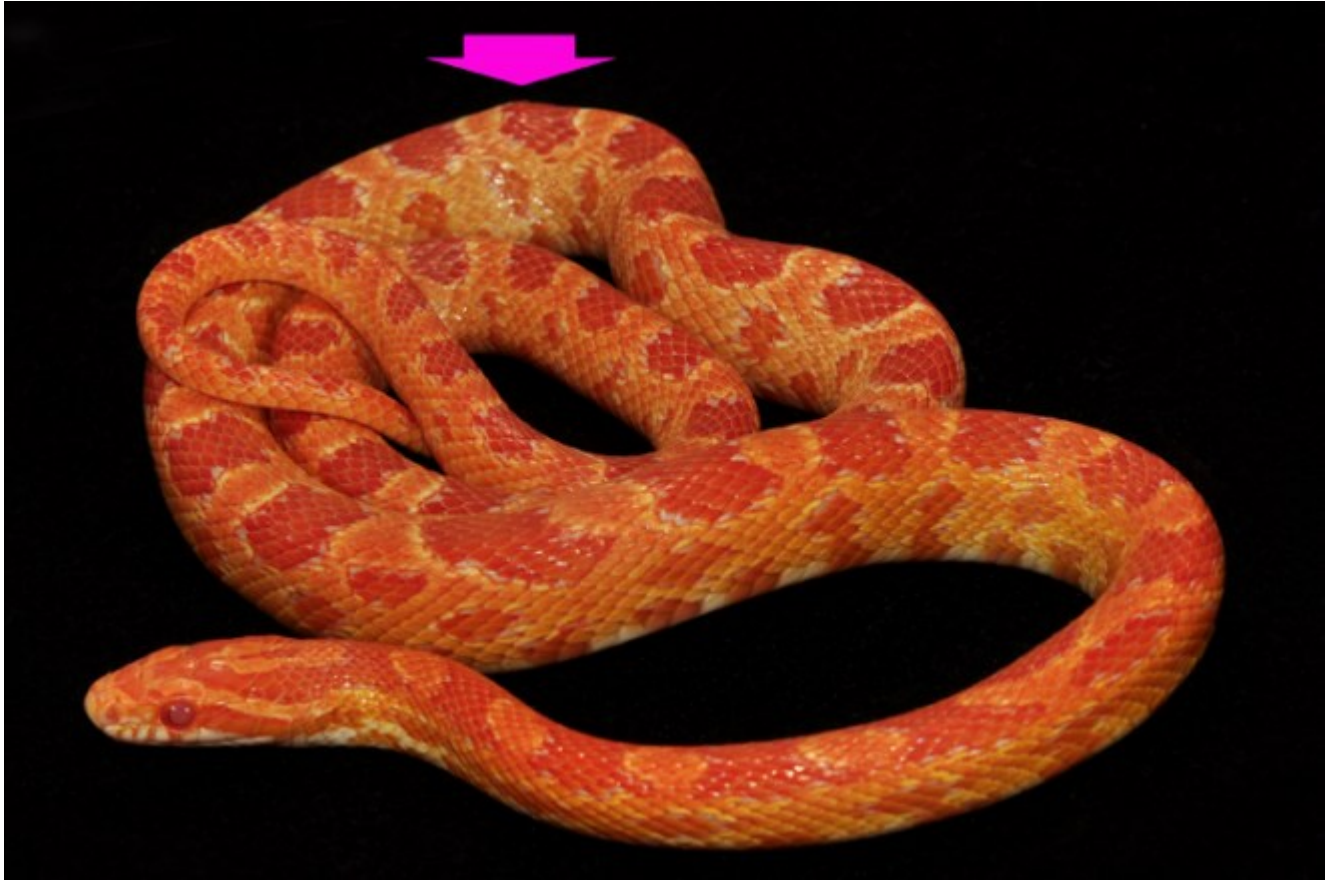


## Show & \$ell

{product id=878}



From the SCRATCH & DENT Department, this 2013 Amel corn snake Het Palmatto has a sizable spinal kink about 1/2 way down her body (pink arrow). She is 28" long, eating frozen/thawed unaltered hopper mice. The growth rate of the kink has always been proportionately the same as the rest of her body (ergo, not out-pacing the normal growth rate of the snake). If I had the slightest suspicion that the kink would have a negative impact on (or preclude) normal reproduction, she would not be for sale. Therefore, her \$2,000.00 USD price with FREE SHIPPING reflects a 40% discount I'm willing to offer because of her kink.



Same snake in different pose.